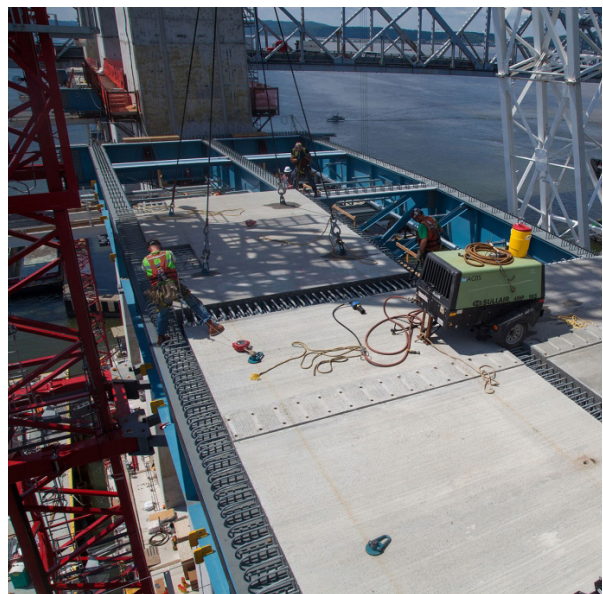




PORTABLE COMPRESSOR APPLICATION

DEMOLITION AND BRIDGE DECKS

Compressed air is everywhere. Portable diesel air compressors bring compressed air wherever it is needed: plantside, roadside, refineryside and many other jobsites.



Compressed air is everywhere. Portable diesel air compressors bring compressed air wherever it is needed: plantside, roadside, refineryside and many other jobsites.

This month's feature application is using portable air compressors and pneumatic tools for demolition and bridge decks.

One thing always changing is infrastructure. As cities grow, there is a need to improve and expand roads and bridges. As part of road and bridge work, portable air compressors and pneumatic tools are key. Sullair 185 and 375 Series portable air compressors are most commonly found in this application.

Using the 185 cfm compressor as an example, a Sullair MPB-90 pavement breaker consumes 60 cfm, which means you can use up to three of them at a time when run through a manifold.

In street repair work, workers also often use the Sullair 185 Series compressor to blow expansion cracks.

Contact your authorized Sullair distributor to learn more about this application.

